

MH MEDIUM-DUTY LOGIC JACKSHAFT OPERATOR

SECTION 08 71 13



KEY FEATURES

STANDARD APPLICATION

Recommended for small rolling steel doors/grilles and high or vertical-lift sectional overhead doors in medium duty-cycle commercial applications where a manual hoist is required

RATED DUTY CYCLE

Medium-duty: Up to 12 cycles/hour and up to 50 cycles/day (using continuous-rated motor)

OPERATOR SPEED

8-9 Inches per second

LIMIT SETTINGS

Mechanical

EMERGENCY DISCONNECT FOR MANUAL OPERATION

Floor-level emergency release sash chain

EMERGENCY DISCONNECT WITH AUTO-RECONNECT

Reconnects when tension is removed from emergency release sash chain

PROGRAMMING

Tactile buttons

CIRCUIT BOARD

Solid-state medium-duty logic circuit board

TIMER-TO-CLOSE

Programmable from 5-60 seconds in 5-second increments

CLUTCH

Standard adjustable friction clutch

MOTOR OPERATOR WALL CONTROL

3-Button Control Station

PUSH BUTTON STATION

3-Push button station (Open/Close/Stop)

SPECIFICATIONS

RADIO RECEIVER

Security+® 315 MHz radio receiver; accepts up to 23 Security+ remote controls and unlimited DIP switch remote controls

VOLTAGE CONNECTIONS

Single-phase: 115V

CONTROL CIRCUIT

24V NEC class 2

DRIVE REDUCTION

First -stage heavy-duty 4L V-belt; second and third stages #48 chain

BEARINGS/BUSHINGS

Heavy-duty oil-filled bushings

BRAKE

Heavy-duty solenoid-actuated brake

CONSTRUCTION

NEMA 1 type electrical box; heavy-duty 11-gauge steel frame with baked-on powder coat finish; all reduction sprockets drilled and pinned to shafts

WARRANTY

2 years

INSTALLATION FEATURES

UNIVERSAL MOUNTING

Yes

MAXIMUM DOOR HEIGHT

14 feet standard with additional capability*

MAXIMUM DOOR WIDTH

22 feet*

MAXIMUM ALLOWABLE SQUARE FOOTAGE

320 square feet

This commercial door operator must feature constant pressure to close or be equipped with an external monitored entrapment protection device. Use only LiftMaster monitored entrapment protection devices itemized on the accessory page of the operators installation manual to meet UL 325 requirements.

*Contact us at Specs@LiftMaster.com for additional capabilities.

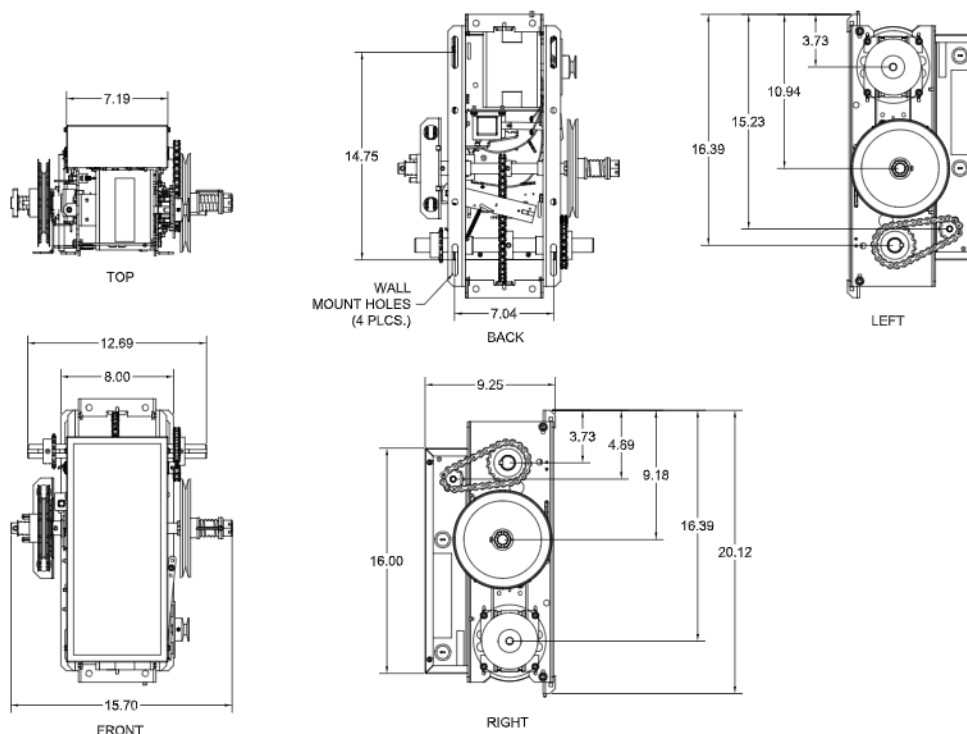
DATA SHEET
MEDIUM-DUTY LOGIC JACKSHAFT
OPERATOR

LiftMaster®

MH MEDIUM-DUTY LOGIC JACKSHAFT OPERATOR

SECTION 08 71 13

DIMENSIONS



CAPACITY

MAXIMUM DOOR AREA (SQ. FT.)						
ROLLING	24 GA. STEEL	22 GA. STEEL	-	20 GA., 18 GA. STEEL	16 GA. STEEL	-
	ALUMINUM GRILLES	ALUMINUM DOORS	-	STEEL GRILLES	-	-
SECTIONAL	-	24 GA., 22 GA. STEEL	20 GA. STEEL	-	16 GA. STEEL	-
	FIBERGLASS	ALUMINUM DOORS	WOOD DOORS	-	-	-
	-	-	24 GA. STEEL INSULATED	-	20 GA. STEEL INSULATED	16 GA. STEEL INSULATED
SQ FT.	320	275	250	200	160	120

On steel insulated doors, a 24-gauge back panel is assumed. Recommended max duty cycles: 12 cycles per hour; fewer than 50 cycles/day.