

F2 WIRING TYPE (K-LINE OPERATORS) CONVERSION

90F2 FOR MODELS: T, GT, J, H, GH, SD, GSD

APPLICATION

This modification is available to Model T, GT, J, H, GH, GSD and SD standard door operators with 24V control circuits (M). Required for use with 4-wire "fail-safe" type electrical edges.

NOTE: For operators with logic control board (L), use the CPSII commercial protector system II.

WIRING

1. Disconnect power to operator.
2. Position door in mid-position, set limit nuts so that both open and close limits switches are depressed (listen for click).
3. Connect the diode (provided in operator box) to the two wires of the four wire safety edge as shown. The polarity must be correct for the fail safe circuit to function.
4. Connect the remaining two leads of the safety edge to terminals 3 and 10 as shown.
5. Restore power to operator.
6. Refer to the two test lights built into the fail safe circuit board in the control box.
 - If red light flashes, reverse connections terminal 3 and 10.
 - If both red and green flash, the diode is connected improperly. Check connections.
 - If green light only is on, connections are correct. Proceed with limit switch adjustment per owner's manual.

NOTE: The door will not close if safety edge or wiring is damaged. Do not apply power until after reading fail safe safety instructions.

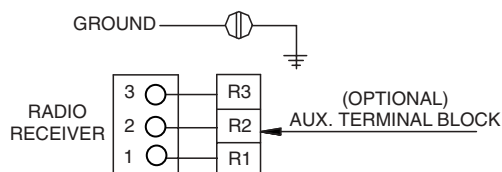
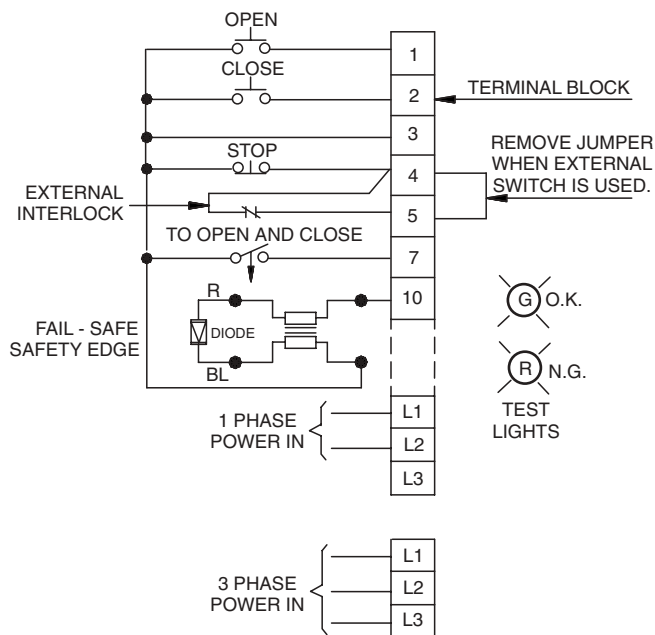


WARNING

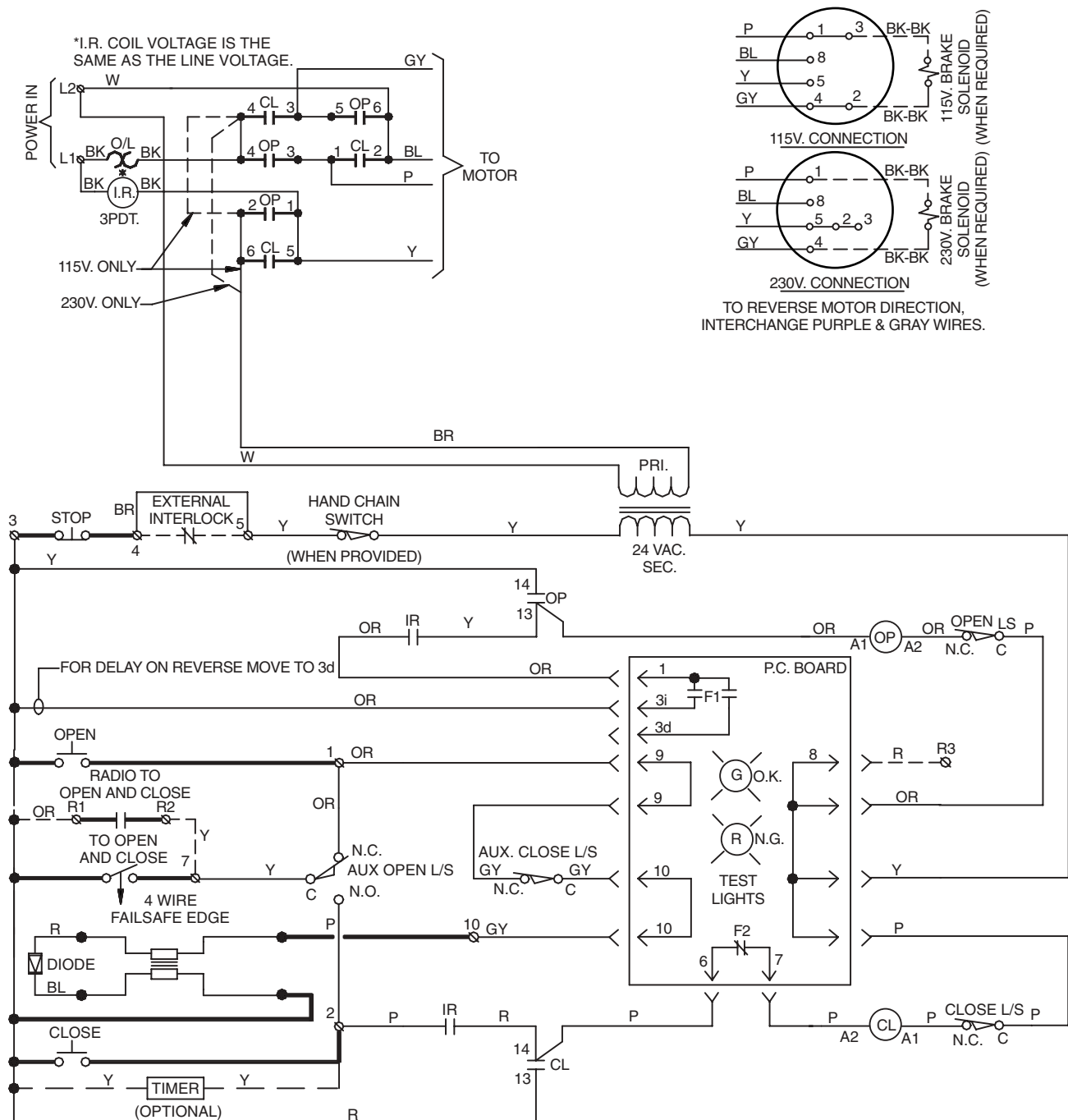
To prevent possible **SERIOUS INJURY** or **DEATH** from electrocution, disconnect electric power to operator **BEFORE** installing.

ALL electrical connections **MUST** be made by a qualified individual.

FIELD WIRING



1 PHASE F2 WIRING- 0192



NOTES:

1. *I.R. (Instant Reverse) relay is wired normally open and is held closed when motor is not running.*
2. *Terminals R1, R2, and R3 are on optional external terminal block.*
3. *Optional timer to close will, after preset time, close the door whenever it is not fully closed and all open and safety devices are cleared.*
4. *We recommend the use of 16 gauge or heavier wire for all control circuit wiring.*

REPLACEMENT PARTS	
Fail Safe Board	P/N 7129505
Diode	P/N 2940051

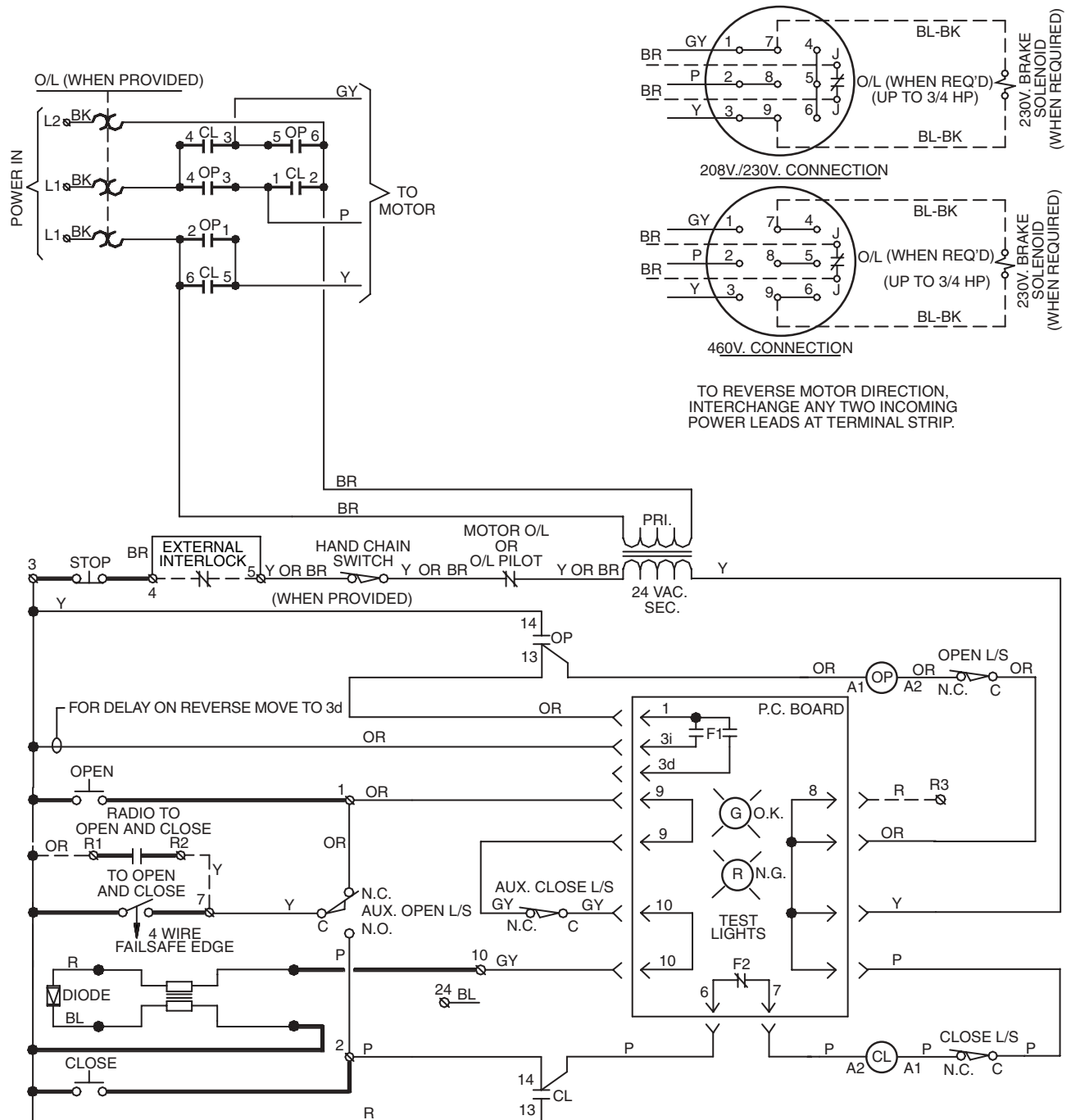
Fail Safe Board

P/N 7129505

Diode

P/N 2940051

3 PHASE F2 WIRING - 193



NOTE: Terminals R1, R2 and R3 are on optional external terminal block.

