

The Next Generation

MAXUM Series Commercial Door Operators



BUYING GUIDE

Fast. Smart. Simple.

LiftMaster

POWERED BY myQ®

Introducing the new MAXUM Series

LiftMaster® is pioneering the next generation of innovation for commercial door operation. The MAXUM Series of DC commercial door operators are a state-of-the-art platform that introduce next-level versatility in a sleek, purpose-built design that's easier to install and service. With unrivaled performance and intelligence, the new lineup will help today's commercial facilities take the next step towards a smarter future.

Selecting the right DC commercial door operator involves considering various factors such as door type, door weight and usage frequency. To help ensure you are selecting the right operator for your application, the following pages provide a step-by-step guide to help you determine the appropriate DC commercial door operator for your facility.



Scan to learn more about
MAXUM Commercial Door
Operators.

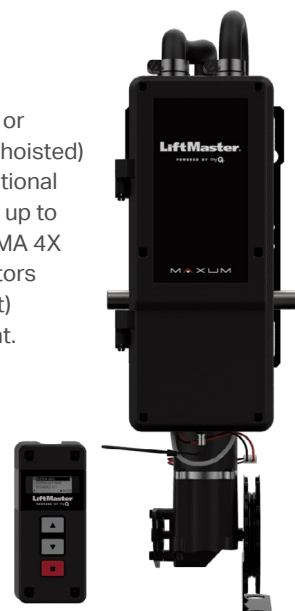
JDC Jackshaft

Next-generation standard duty Jackshaft (non-hoisted) DC operator supports sectional or rolling doors up to 700 lbs in NEMA 1 applications. Jackshaft operators are preferred over trolleys in applications where overhead space is at a premium. 4.5 Ah battery backup kit is included.



JHDC Hoist

Next-generation standard or extended duty Jackshaft (hoisted) DC operator supports sectional or rolling doors that weigh up to 2200 lbs in NEMA 1 or NEMA 4X applications. JHDC operators include a hand chain (hoist) for manual door movement. Battery backup capable.



TDC Trolley

Next-generation standard or extended duty TDC operator supports standard-lift sectional doors up to 2200 lbs in NEMA 1 or NEMA 4X applications. Battery backup capable.



NEW Partner Portal simplifies ordering

With the debut of the new MAXUM Series of operators, LiftMaster has also introduced an enhanced ordering process that allows you to simply order what you need à la carte. The new Partner Portal not only guides you to the operator that fits your application needs, but it also recommends all the installation components and accessories that are needed for your specific installation, all without you having to know the product numbers. Recommended accessories can be ordered with an operator or placed as a separate stocking order as needed.

Ordering is as easy as 1, 2, 3

Embracing a new approach to ordering an operator on the Partner Portal has never been easier. This guide provides a simple, 3-step process for ordering the new DC commercial door operators and accessories based on door specifications, voltage and usage.

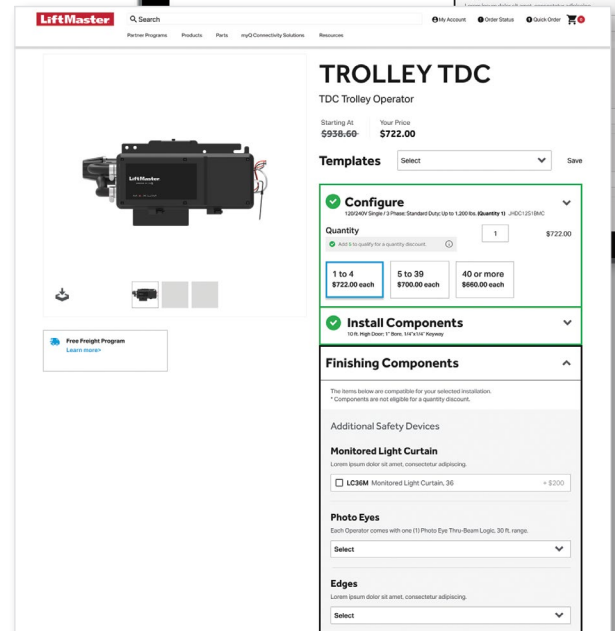
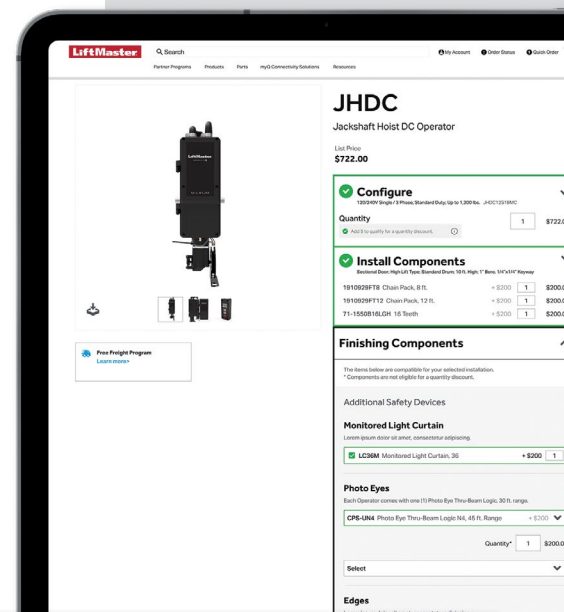
This guide walks you through the Partner Portal's new 3-step ordering process:

Step 1. Select and configure an operator

Step 2. Select required installation components*

Step 3. Select additional accessories and field install kits to improve your operator's installation and functionality

*These vary by operator and application but will be automatically selected for you.



Step 1

Select and configure an operator

Configure your choice of MAXUM DC operator in a step-by-step process based on door weight and type, installation voltage/phase and number of daily door cycles. With a trimmed down lineup of just 26 operators, the process of ordering and stocking has been significantly simplified.

All operators, JDC, JHDC and TDC, come standard with a monitored entrapment protection device.

All units will include the CPS-U and NEMA 4X units will include the CPS-UN4. These entrapment protection devices are packed in and cannot be swapped out. If additional entrapment devices are needed, they can be ordered/added as an additional accessory in Step 3 of the ordering process.

JDC Jackshaft Operator

Model	Max Door Weight	Voltage/Phase	Equivalent Horsepower	NEMA 4X	Cycles Per Day	Launch Phase
JDC7S1BMC	700 lbs.	120Vac 1 PH/240Vac 1/3PH*	1/2 HP	-	Standard Duty up to 90 Cycles a Day	1
JDC7S4BMC	700 lbs.	480Vac 3PH	1/2 HP	-	Standard Duty up to 90 Cycles a Day	1

NOTE: 4.5 Ah Battery Backup is included as standard for the JDC family.

*Convertible to 208Vac 3PH or 600Vac 3PH via transformer, ordered separately.

JHDC Hoist Operators

Model	Max Door Weight	Voltage/Phase	Equivalent Horsepower	NEMA 4X	Cycles Per Day	Launch Phase
JHDC7S1BMC	700 lbs.	120Vac 1 PH/240Vac 1/3PH*	1/2 HP	-	Standard Duty up to 90 Cycles a Day	1
JHDC7S4BMC	700 lbs.	480Vac 3PH	1/2 HP	-	Standard Duty up to 90 Cycles a Day	1
JHDC12S1BMC	1200 lbs.	120Vac 1 PH/240Vac 1/3PH*	3/4 HP	-	Standard Duty up to 90 Cycles a Day	1
JHDC12S4BMC	1200 lbs.	480Vac 3PH	3/4 HP	-	Standard Duty up to 90 Cycles a Day	1
JHDC12X1BMC	1200 lbs.	120Vac 1 PH/240Vac 1/3PH*	3/4 HP	-	Extended Duty** up to 150 Cycles a Day	1
JHDC12X4BMC	1200 lbs.	480Vac 3PH	3/4 HP	-	Extended Duty** up to 150 Cycles a Day	1
JHDC22X1BMC	2200 lbs.	120Vac 1 PH/240Vac 1/3PH*	1 and 1.5 HP	-	Extended Duty** up to 150 Cycles a Day	2
JHDC22X4BMC	2200 lbs.	480Vac 3PH	1 and 1.5 HP	-	Extended Duty** up to 150 Cycles a Day	2
JHDC12X1N4XMC	1200 lbs.	120Vac 1 PH/240Vac 1/3PH*	3/4 HP	Yes	Extended Duty** up to 150 Cycles a Day	3
JHDC12X4N4XMC	1200 lbs.	480Vac 3PH	3/4 HP	Yes	Extended Duty** up to 150 Cycles a Day	3
JHDC22X1N4XMC	2200 lbs.	120Vac 1 PH/240Vac 1/3PH*	1 and 1.5 HP	Yes	Extended Duty** up to 150 Cycles a Day	3
JHDC22X4N4XMC	2200 lbs.	480Vac 3PH	1 and 1.5 HP	Yes	Extended Duty** up to 150 Cycles a Day	3

NOTE: Phase 1 is Q1 of 2024, Phase 2 is Q3 of 2024 and Phase 3 is Q1 of 2025. JDC and JHDC maximum door height is up to 40 ft. with up to a 10 ft. high lift.

*Convertible to 208Vac 3PH or 600Vac 3PH via transformer, ordered separately.

**Extended Duty is formerly known as Heavy Industrial Duty or Gear Head.



TDC Trolley Operators

Model	Max Door Weight	Voltage/Phase	Equivalent Horsepower	NEMA 4X	Extended Duty	Launch Phase
TDC7S1BMC	700 lbs.	120Vac 1 PH/240Vac 1/3PH*	1/2 HP	-	Standard Duty up to 90 Cycles a Day	1
TDC7S4BMC	700 lbs.	480Vac 3PH	1/2 HP	-	Standard Duty up to 90 Cycles a Day	1
TDC12S1BMC	1200 lbs.	120Vac 1 PH/240Vac 1/3PH*	3/4 HP	-	Standard Duty up to 90 Cycles a Day	1
TDC12S4BMC	1200 lbs.	480Vac 3PH	3/4 HP	-	Standard Duty up to 90 Cycles a Day	1
TDC12X1BMC	1200 lbs.	120Vac 1 PH/240Vac 1/3PH*	3/4 HP	-	Extended Duty** up to 150 Cycles a Day	1
TDC12X4BMC	1200 lbs.	480Vac 3PH	3/4 HP	-	Extended Duty** up to 150 Cycles a Day	1
TDC22X1BMC	2200 lbs.	120Vac 1 PH/240Vac 1/3PH*	1 and 1.5 HP	-	Extended Duty** up to 150 Cycles a Day	2
TDC22X4BMC	2200 lbs.	480Vac 3PH	1 and 1.5 HP	-	Extended Duty** up to 150 Cycles a Day	2
TDC12X1N4XMC	1200 lbs.	120Vac 1 PH/240Vac 1/3PH*	3/4 HP	Yes	Extended Duty** up to 150 Cycles a Day	3
TDC12X4N4XMC	1200 lbs.	480Vac 3PH	3/4 HP	Yes	Extended Duty** up to 150 Cycles a Day	3
TDC22X1N4XMC	2200 lbs.	120Vac 1 PH/240Vac 1/3PH*	1 and 1.5 HP	Yes	Extended Duty** up to 150 Cycles a Day	3
TDC22X4N4XMC	2200 lbs.	480Vac 3PH	1/2 HP	Yes	Extended Duty** up to 150 Cycles a Day	3

NOTE: Phase 1 is Q1 of 2024, Phase 2 is Q3 of 2024 and Phase 3 is Q1 of 2025.

TDC maximum door height is up to 24 feet.

*Convertible to 208Vac 3PH or 600Vac 3PH via transformer, ordered separately.

**Extended Duty is formerly known as Heavy Industrial Duty or Gear Head.

Step 2 Select required install components

Accessories and install kits are essential in ensuring both seamless and efficient operation of your MAXUM operator. The Partner Portal will automatically select the required installation components based on your selected operator and application, providing a smooth operation that prioritizes safety.

JHDC units come standard with 25 feet of hoist chain, which is enough for 16 feet of total height. For doors above 16 feet of total height, additional 25-foot chain packs can be ordered.

Additional hoist chain for JHDC units on oversized doors

Determine total hoist chain needed by adding any extra high lift to door height. Doors over 16ft in height will need extra hoist chain, as well as sectional doors with high lift that when added exceed 16 ft of total height.

Required sprocket for JDC and JHDC operators

A sprocket is required for installation of each JDC and JHDC operator. See sprocket table below for suggested sprocket selection to safely achieve recommended door speed.

Amount of additional hoist chain needed for JHDC units on taller doors. Model 1910929FT25	
Total Height (ft.)	Chain packs now come in 25ft, additional chain packs needed:
0 - 16	0
17 - 29	1
30 - 41	2
42 - 50	3

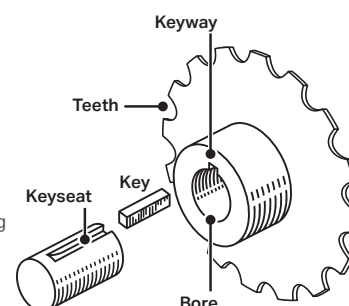
NOTE: Additional Hoist Chain will be auto-calculated in the Partner Portal based on door height and any extra high lift or vertical lift provided.

Bore and Keyway Description

Tooth Count: Sprocket tooth count is recommended to optimize the speed of the doors at 12" per second (on sectional doors).

Keyway: Slot machined in the bore and shaft that holds the key, ensuring proper torque transmission.

Bore: Center hole of sprocket—must match in diameter with shaft.



REQUIRED Sprocket selection for JDC or JHDC operators only

Sprocket with Key Kits (For #50 Chain), needed for JDC and JHDC						
Weight Characteristic of Door	Door Type	Tooth Count	1 in. Bore, 1/4 in. Keyway	1.25 in. Bore, 1/4 in. Keyway	1 in. Bore, 3/8 in. Keyway	1.25 in. Bore, 3/8 in. Keyway
700	Sectional	16	71-1550B16LGH	71-1550B16QGH		
1200	Sectional	22	71-1550B22LGH	71-1550B22QGH		
2200	Sectional	32	71-1550B32LGH	71-1550B32QGH		
700	Rolling, Uninsulated	50	71-1550B50LGH	71-1550B50QGH	71-1550B50LKH	71-1550B50QKH
700	Rolling, Insulated	60	71-1550B60LGH	71-1550B60QGH	71-1550B60LKH	71-1550B60QKH
1200	Rolling, Insulated and Uninsulated	72	71-1550B72LGH	71-1550B72QGH	71-1550B72LKH	71-1550B72QKH
2200	Rolling, Insulated and Uninsulated	82	71-1550B82LGH	71-1550B82QGH	71-1550B82LKH	71-1550B82QKH

NOTE: 3/8 in. keyway options are only available for rolling door applications.



Track and chain kit selection for TDC Operators

Determine the right track and chain kit for your TDC operators by measuring your door's height, from bottom to top.



REQUIRED Track and chain kit selection for TDC operators only

1 kit (which consists of 2 tracks, 1 chain, and any needed spacers) is required for installation of each operator, order using the kits listed below.

Track and Chain Kits, needed for TDC		
Operator Size	Door Height	TDC Components Kit
TDC7 Operators	8	TDC7-8
TDC7 Operators	10	TDC7-10
TDC7 Operators	12	TDC7-12
TDC7 Operators	14	TDC7-14
TDC7 Operators	16	TDC7-16
TDC7 Operators	18	TDC7-18
TDC7 Operators	20	TDC7-20
TDC7 Operators	22	TDC7-22
TDC7 Operators	24	TDC7-24
TDC12 & TDC22 Operators	8	TDC1222-8
TDC12 & TDC22 Operators	10	TDC1222-10
TDC12 & TDC22 Operators	12	TDC1222-12
TDC12 & TDC22 Operators	14	TDC1222-14
TDC12 & TDC22 Operators	16	TDC1222-16
TDC12 & TDC22 Operators	18	TDC1222-18
TDC12 & TDC22 Operators	20	TDC1222-20
TDC12 & TDC22 Operators	22	TDC1222-22
TDC12 & TDC22 Operators	24	TDC1222-24

NOTE: Track and chain will be auto-calculated on the Partner Portal at time of order based on door height and type.

Kits for TDC7 operators include #48 chain; kits for TDC12 and TDC22 operators include #41 chain.

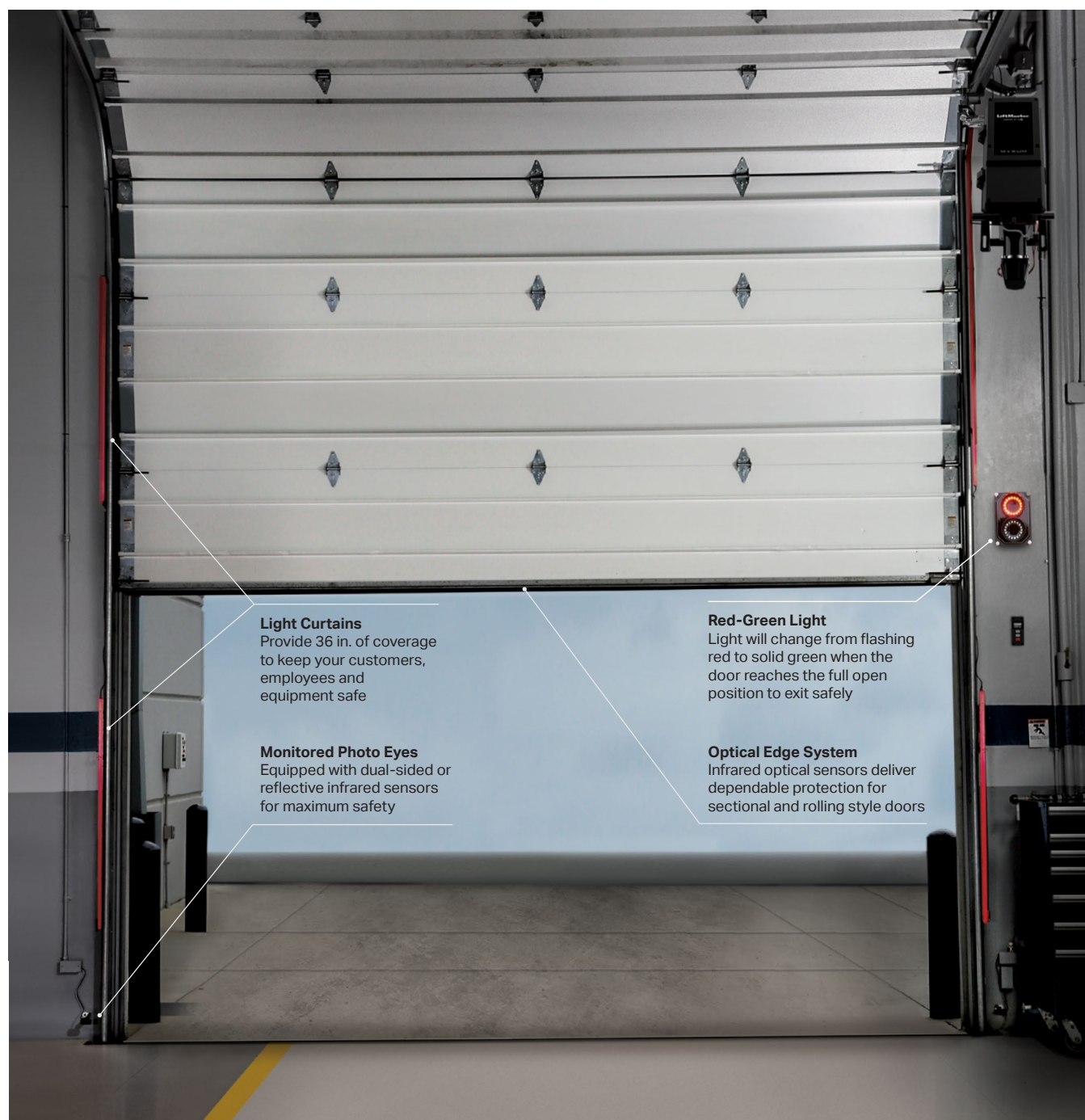
Step 3 Select accessories and field kits

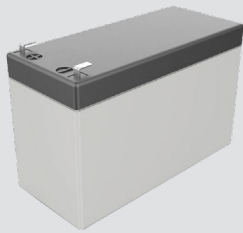
Enhance operator functionality and installation with accessories and field kits

LiftMaster has added many features to the new MAXUM series that come standard with the operator. For those not included, field installable kits are offered to easily replace current modifications. These kits can be kept on your shelves if needed in a pinch, are easy to install, and reduce the timing to receive modified units.

Safety is a number one priority for commercial door operators. LiftMaster offers a full line of entrapment protection devices for all of your application needs, including new through beam, retro reflective and wireless edge kits.

View the full list of accessories and field kits on the Partner Portal.





7 Ah Battery Backup Kit

DC Battery Backup Kit includes two (2) 7 Ah batteries, battery enclosure and connectors.

DC7AH



208V and 600V Transformer Voltage Kits

External transformer kits for converting 120/240V operators to 208V or 600V operator type.

XF208VAC7, XF208VAC12, XF208VAC22, XF600VAC7, XF600VAC12, XF600VAC22



Monitored Wireless Edge Kit

New for commercial door operators, monitored wireless edge kit stops and/or reverses a moving door when sensing a pathway obstruction.

LMWEKITU



Hi-Intensity Red/Green Traffic Light

IP65/NEMA4 all-weather enclosure is an ideal solution for fire stations, auto sales and service centers, municipalities, and parking facilities

RGL-CTL



Auxiliary Relay Board

Use for switching on/off auxiliary devices such as lights, bells, horns, strobes and other warning devices. Board mounts inside the operator cover for easy installation.

AUXREL



3-Button Remote Control

Controls up to three door operators with extended range with Security+2.0®.

893LMMC

Single Button Programmable DIP Remote

811LMX



36 in. Monitored Light Curtain

Provides up to 33 ft. of protection range and a minimum of 36 in. of height coverage to keep your equipment safe.

LC36M



Loop Detector Board

Accessory board to plug-in Loop Detector (LOOPDETL) Board mounts inside the operator cover for easy installation.

LPEXP

Step 3 Select accessories and field kits (continued)

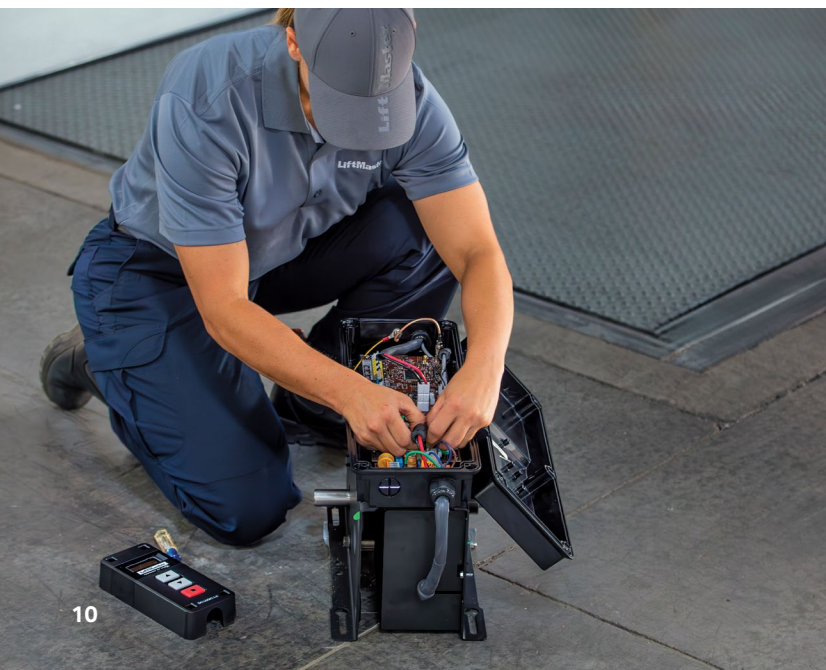
Trolley field install kits

Adding a trolley field install kit to a standard JDC, JHDC or TDC operator can provide extra support and stability for wider and heavier commercial door applications. These added setups will help to improve the overall performance and reliability of the commercial door operator.



Door Height	Auxiliary Trolley		Dual Auxiliary Trolley		
	JDC/JHDC 700	JDC/JHDC 1200 & 2200	JDC/JHDC 700	JDC/JHDC 1200	JDC/JHDC 2200
8 ft.	7AUXTROLLEY08	1222AUXTROLLEY08	7DUALAUXTROLLEY08	12DUALAUXTROLLEY08	22DUALAUXTROLLEY08
10 ft.	7AUXTROLLEY10	1222AUXTROLLEY10	7DUALAUXTROLLEY10	12DUALAUXTROLLEY10	22DUALAUXTROLLEY10
12 ft.	7AUXTROLLEY12	1222AUXTROLLEY12	7DUALAUXTROLLEY12	12DUALAUXTROLLEY12	22DUALAUXTROLLEY12
14 ft.	7AUXTROLLEY14	1222AUXTROLLEY14	7DUALAUXTROLLEY14	12DUALAUXTROLLEY14	22DUALAUXTROLLEY14
16 ft.	7AUXTROLLEY16	1222AUXTROLLEY16	7DUALAUXTROLLEY16	12DUALAUXTROLLEY16	22DUALAUXTROLLEY16
18 ft.	7AUXTROLLEY18	1222AUXTROLLEY18	7DUALAUXTROLLEY18	12DUALAUXTROLLEY18	22DUALAUXTROLLEY18
20 ft.	7AUXTROLLEY20	1222AUXTROLLEY20	7DUALAUXTROLLEY20	12DUALAUXTROLLEY20	22DUALAUXTROLLEY20
22 ft.	7AUXTROLLEY22	1222AUXTROLLEY22	7DUALAUXTROLLEY22	12DUALAUXTROLLEY22	22DUALAUXTROLLEY22
24 ft.	7AUXTROLLEY24	1222AUXTROLLEY24	7DUALAUXTROLLEY24	12DUALAUXTROLLEY24	22DUALAUXTROLLEY24

*Auxiliary and Dual Auxiliary Trolley Kits for doors larger than 24 ft. doors may be available. Please contact LiftMaster Customer Support.

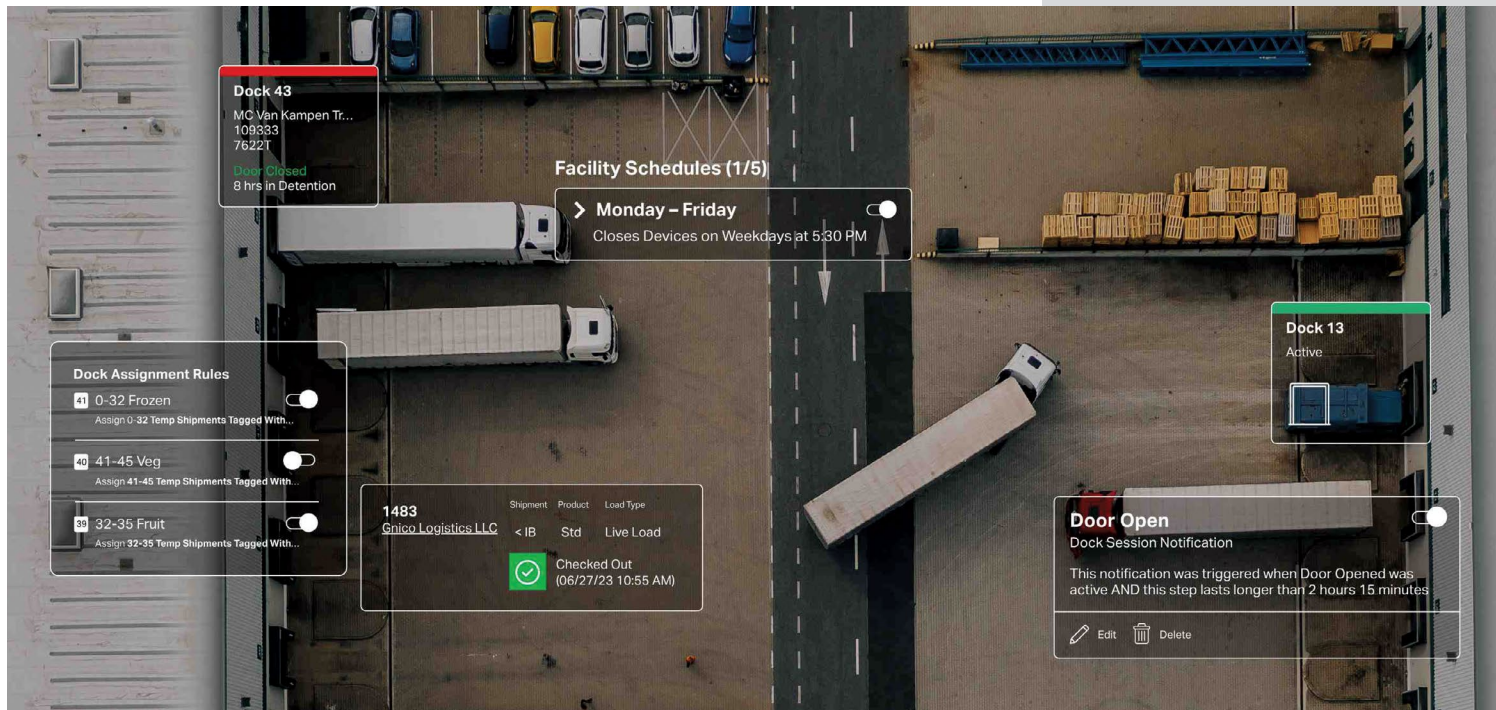
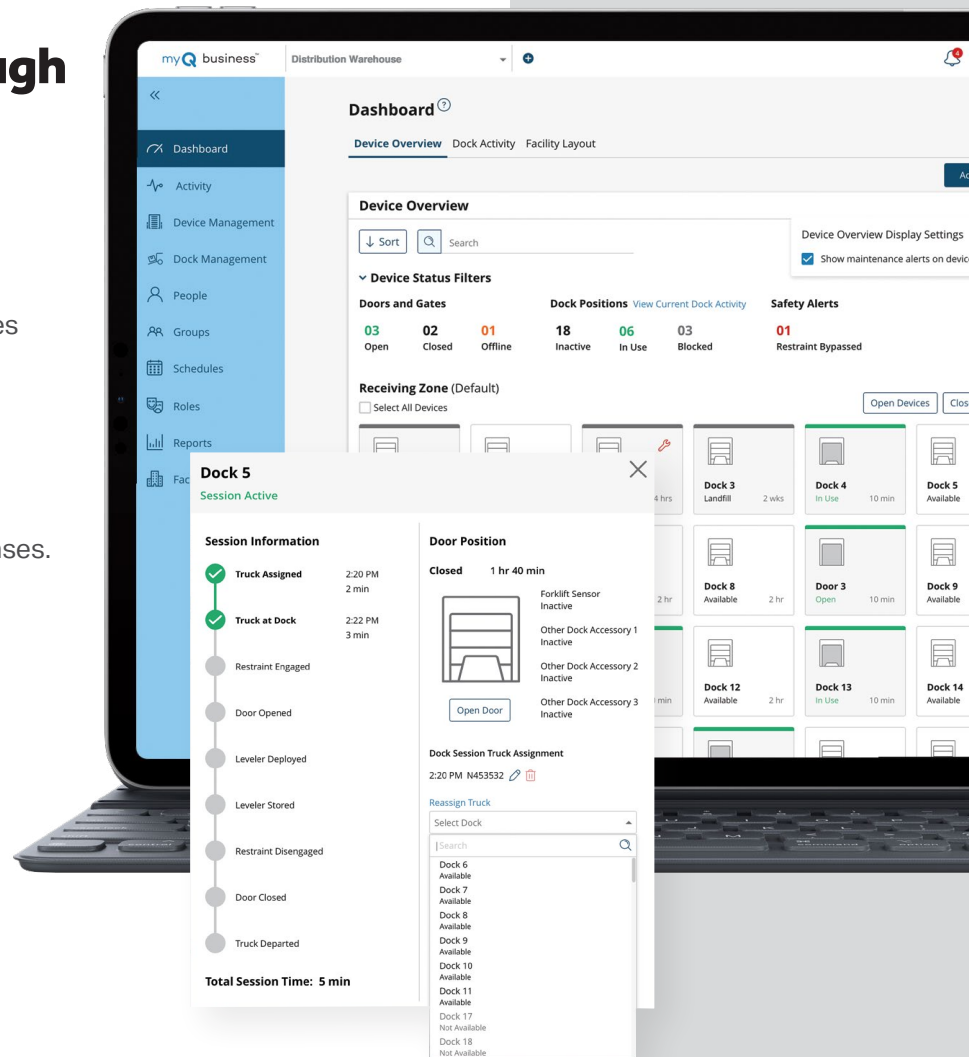


Door Height	Dual Trolley	
	TDC 700	TDC 1200 & 2200
8 ft.	7DUALTROLLEY08	1222DUALTROLLEY08
10 ft.	7DUALTROLLEY10	1222DUALTROLLEY10
12 ft.	7DUALTROLLEY12	1222DUALTROLLEY12
14 ft.	7DUALTROLLEY14	1222DUALTROLLEY14
16 ft.	7DUALTROLLEY16	1222DUALTROLLEY16
18 ft.	7DUALTROLLEY18	1222DUALTROLLEY18
20 ft.	7DUALTROLLEY20	1222DUALTROLLEY20
22 ft.	7DUALTROLLEY22	1222DUALTROLLEY22
24 ft.	7DUALTROLLEY24	1222DUALTROLLEY24

Added efficiency through Wi-Fi Connectivity

Your operator now comes with Wi-Fi® as a standard feature. Connecting to Wi-Fi enables free product enhancements and automatic firmware updates. Wi-Fi also gives you access to myQ Facility, a cloud-based solution that provides a powerful suite of software services, which delivers real-time data and analytics about your facility to your phone. Stay up-to-date and in control, increasing productivity and reducing expenses. Additionally, myQ Enterprise provides a one-stop gate-to-dock performance upgrade that automates and optimizes operations across your facility's inbound and outbound logistics, improving the management, visibility, safety and security of your facility.

For more details on myQ and Wi-Fi connectivity, go to myQ.com/facility.





Ready to order?

Scan this code and begin ordering now through the LiftMaster Partner Portal

Learn more

Visit partner.liftmaster.com/MAXUM

© 2023 The Chamberlain Group, Inc. All Rights Reserved.

LiftMaster, the Liftmaster logo, myQ, myQ logo and Security+ 2.0 are registered trademarks of The Chamberlain Group, Inc.
UL® and the UL logo are trademarks of UL LLC. Wi-Fi® is a registered trademark of Wi-Fi Alliance.
LMCDENOGDCL1 10/23

CGI IS AN ISO9001 REGISTERED COMPANY



IC /FCC
Certified

CGI reserves the right to make design or specification changes without notice.